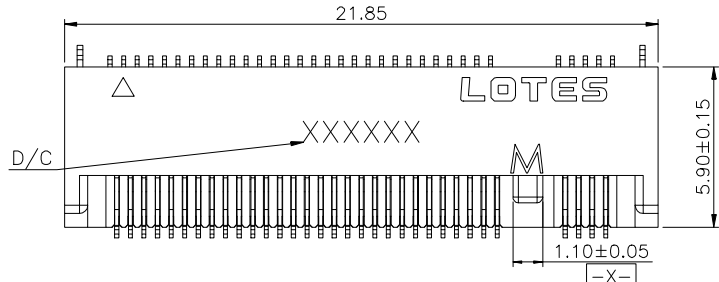


REV.	ECR/NO./DESCRIPTION	DATE	DRAWN	CHECKED	APPROVE
1	SN14190	01/04'15	Sam	Vito	Bamey

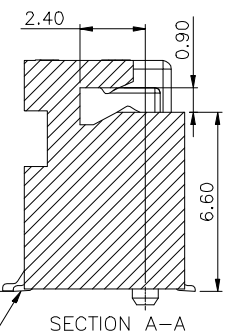
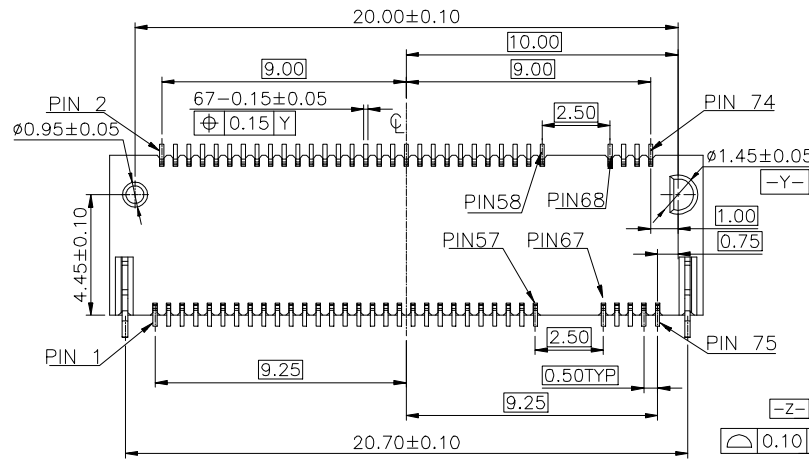
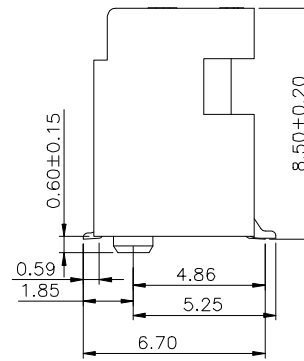
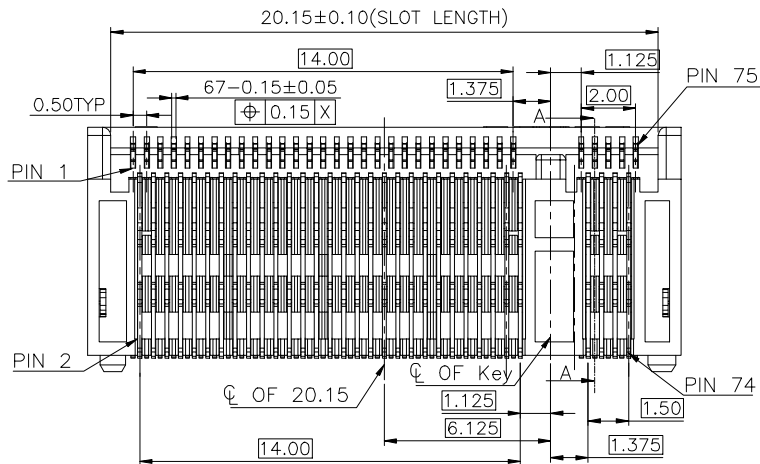
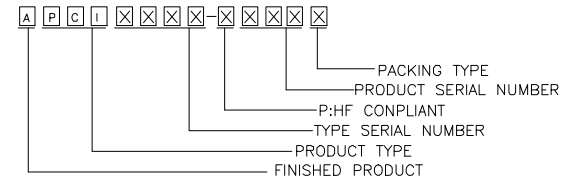


NOTES:

- MATERIAL SPECIFICATION:
 - HOUSING: LCP+40%GF,UL-94V0,BLACK.
 - CONTACT: COPPER ALLOY C1065.
 - SMT TAB: S50C.
- PLATING SPECIFICATION:
 - CONTACT: 50u" MIN. NICKEL UNDER PLATING OVER ALL. G/F" PLATING ON SOLDER AREA. GOLD PLATING ON CONTACT AREA SEE TABLE.
 - SMT TAB: 50u" MIN. NICKEL UNDER PLATING OVER ALL. 80u" MIN. MATTE TIN PLATING ON SOLDER AREA.

- HF COMPLIANT, ROHS COMPLIANT.
- DATE CODE: XXXXXX
 - DAY
 - WEEK
 - YEAR
- MECHANICAL PERFORMANCE:
 - DURABILITY: SEE TABLE
- ELECTRICAL PERFORMANCE:
 - CURRENT: 0.5A PER PIN.
 - LLCR: INITIAL 55mΩ MAX. ; FINAL ΔLLCR=20mΩ MAX..
- IR REFLOW:

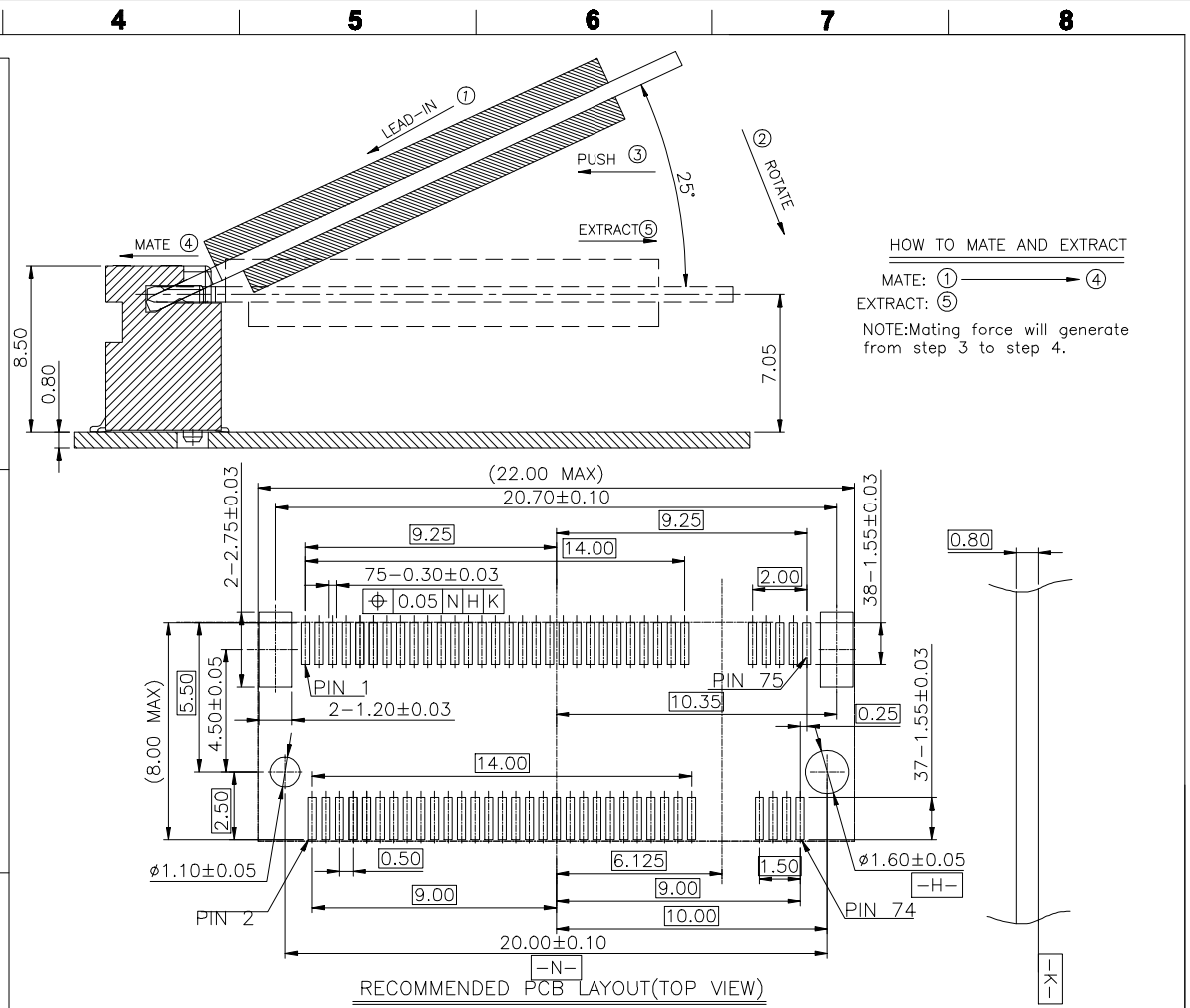
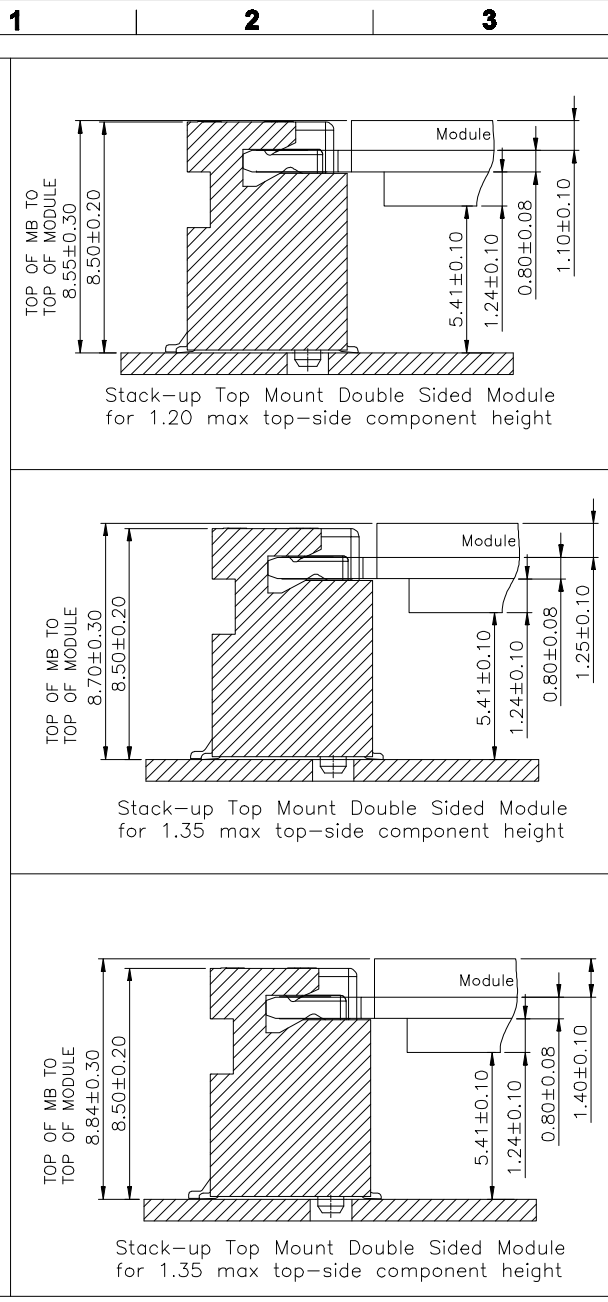
THE TEMPERATURE SHALL BE 260±5°C MAINTAINING 10±1 SECONDS.
- PRODUCT NUMBER NOTE



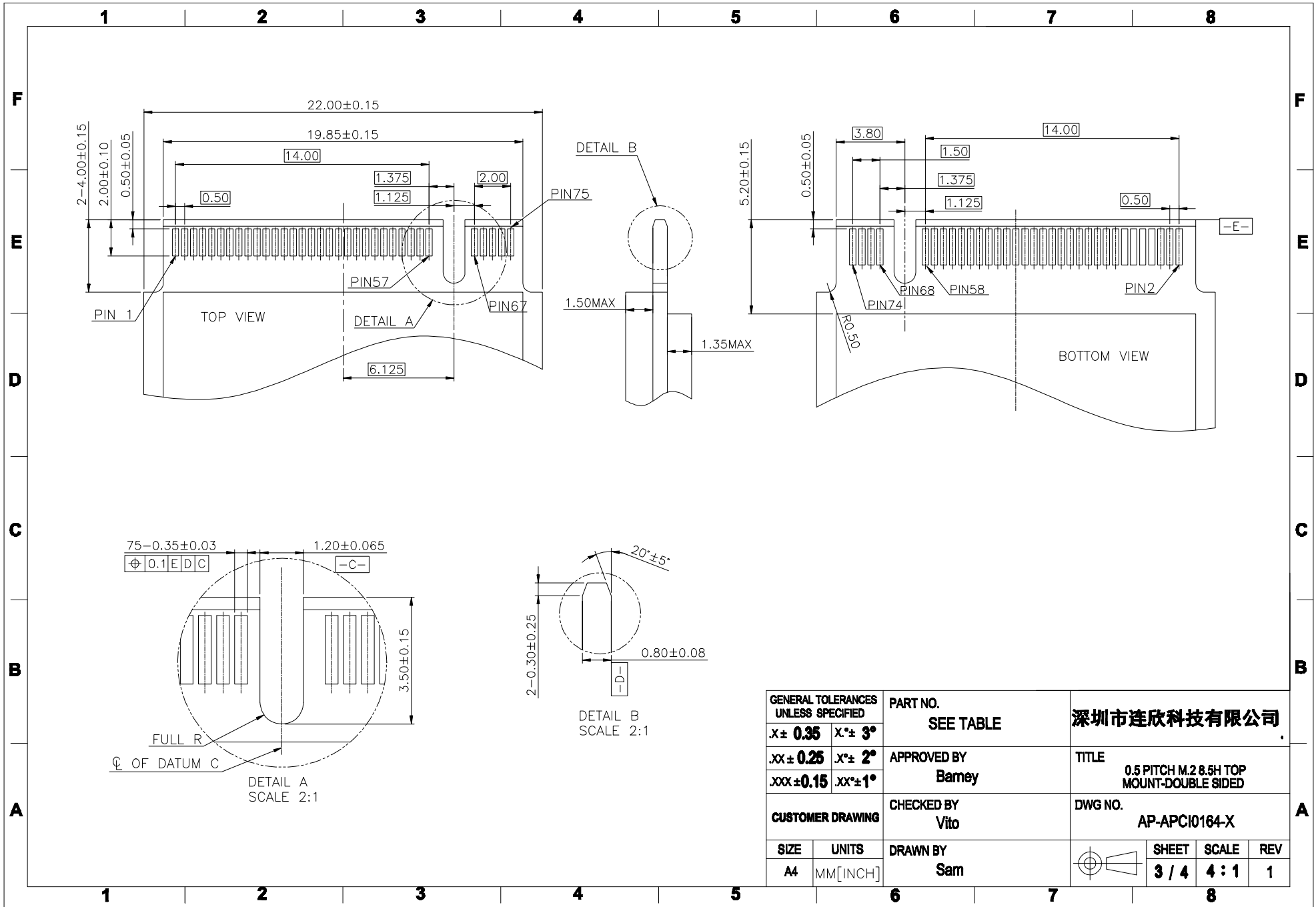
KEY NO	PART NO.	CONTACT PLATING	DURABILITY
M-KEY	APCI0164-P004A	30u" MIN. GOLD	60 CYCLES
	APCI0164-P003A	15u" MIN. GOLD	25 CYCLES
	APCI0164-P002A	10u" MIN. GOLD	25 CYCLES
	APCI0164-P001A	1u" MIN. GOLD	25 CYCLES

GENERAL TOLERANCES UNLESS SPECIFIED		PART NO.	深圳市连欣科技有限公司		
X ± 0.35	X° ± 3°	SEE TABLE			
.XX ± 0.25	.X° ± 2°	APPROVED BY	TITLE		
.XXX ± 0.15	.XX° ± 1°	Bamey	0.5 PITCH M.2 8.5H TOP MOUNT-DOUBLE SIDED		
CUSTOMER DRAWING		CHECKED BY	DWG NO.		
		Vito	AP-APCI0164-X		
SIZE	UNITS	DRAWN BY			
A4	MM [INCH]	Sam	SHEET	SCALE	REV
			1 / 4	4 : 1	1

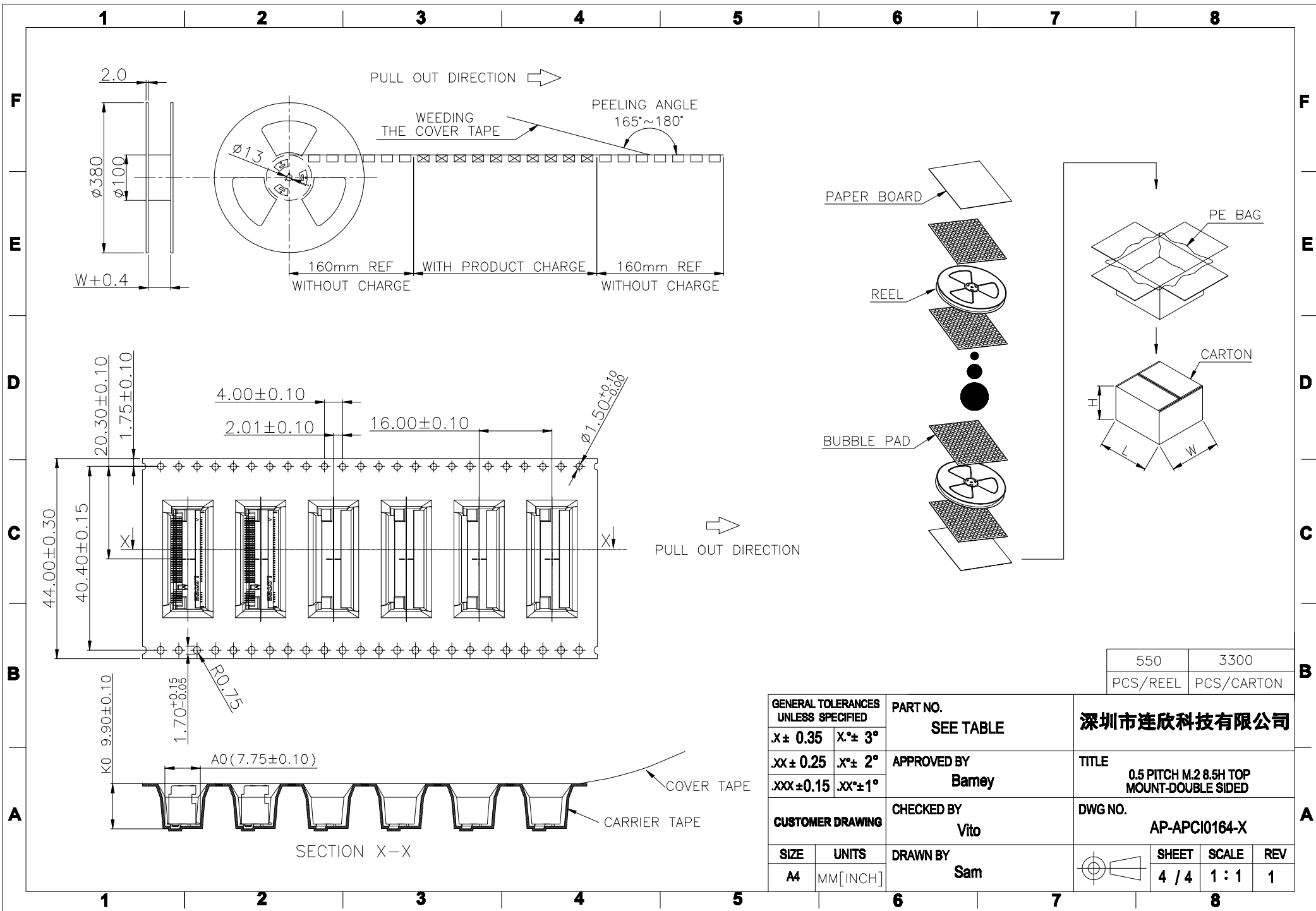
Assembly stack height schematic diagram



深州市连欣科技有限公司		
TITLE 0.5 PITCH M.2 8.5H TOP MOUNT-DOUBLE SIDED		
DWG NO. AP-APCI0164-X		
	SHEET	SCALE
	2 / 4	4 : 1
		REV
		1



GENERAL TOLERANCES UNLESS SPECIFIED		PART NO. SEE TABLE	深圳市连欣科技有限公司		
X± 0.35	X°± 3°		TITLE 0.5 PITCH M.2 8.5H TOP MOUNT-DOUBLE SIDED		
.XX± 0.25	X°± 2°	APPROVED BY Barney	DWG NO. AP-APCI0164-X		
.XXX± 0.15	.XX°± 1°	CHECKED BY Vito	SHEET 3 / 4		
CUSTOMER DRAWING		DRAWN BY Sam	SCALE 4 : 1	REV 1	



550	3300
PCS/REEL	PCS/CARTON

GENERAL TOLERANCES UNLESS SPECIFIED		PART NO. SEE TABLE	深圳市连欣科技有限公司						
$X \pm 0.35$	$X^{\circ} \pm 3^{\circ}$					APPROVED BY Bamey	TITLE 0.5 PITCH M.2 8.5H TOP MOUNT-DOUBLE SIDED		
$.XX \pm 0.25$	$.X^{\circ} \pm 2^{\circ}$					CHECKED BY Vito	DWG NO. AP-APCI0164-X		
$.XXX \pm 0.15$	$.XX^{\circ} \pm 1^{\circ}$	CUSTOMER DRAWING	DRAWN BY Sam	SHEET 4 / 4	SCALE 1 : 1	REV 1			
SIZE A4	UNITS MM[INCH]								