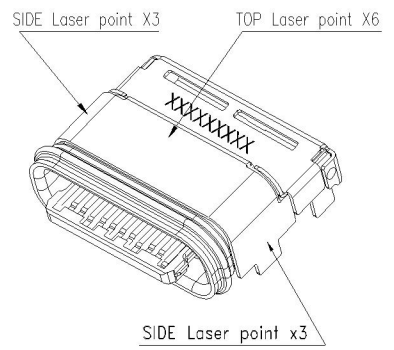
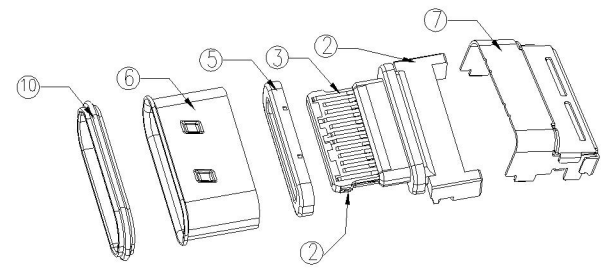
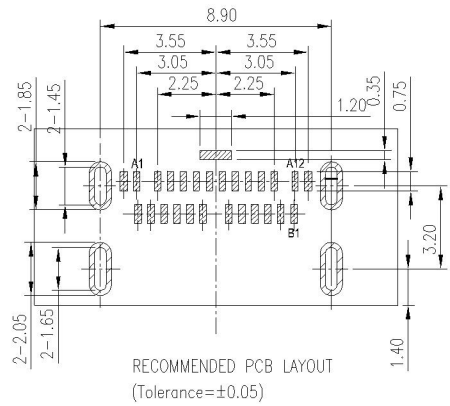




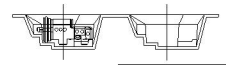
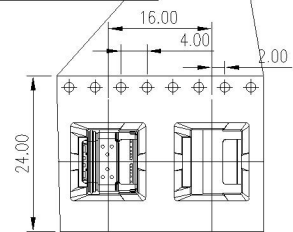
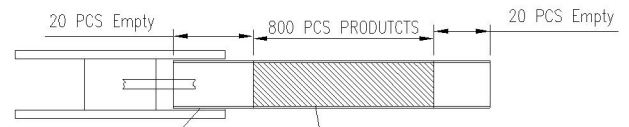
RoHS

REV.	ECN.NO.	APPD.

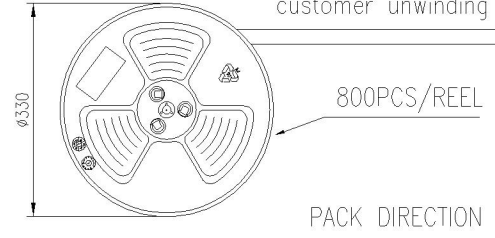


说明:

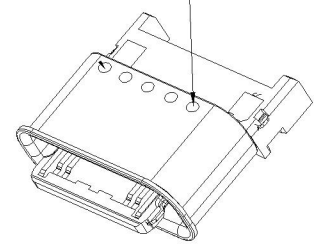
1. Colplanarity: 0.08最大红外线前., 0.10mm MAX
2. 舌PIN的位置: IR前 : 0.08mm MAX; IR 后0.12mm MAX;
3. P/N: 822216-966
4. 包装方式 : 载带包装
5. 接触区和焊接区无毛刺, 除特说明, 冲压毛刺为0.05mm MAX.
6. 未标注尺寸公差为依自由公差为准.
7. 成品端子平面度必须100%检测.
8. 成品可靠性测试要求参照规格书.
9. 产品满足 ROHS 2.0



customer unwinding direction



Front&Back Laser point 2X5



9	密封圈	1PCS	硅胶, 依照客户需求	
8	胶水	1PCS	环氧胶, 黑色	
7	外壳	1PCS	SUS304, T=0.15. 镀镍50u" MIN.	
6	内拉伸壳	1PCS	SUS304, T=0.20. 镀镍50u" MIN.	
5	EMI拉伸壳	1PCS	SUS304, T=0.12. 镀镍50u" MIN.	
4	上排端子	1SET	C18140, T=0.12. 底层镀镍 50-100u", 功能接触区单面	
3	下排端子	1SET	刷镀 Au 15u", 焊接区双面镀金 G/F.	
2	中板	1PCS	SUS301-1/4 H, 镀镍50u" MIN.	
1	塑胶	1PCS	PA46 (HF315) BLACK	
项目	组成部件	用量	材质/处理	备注

深圳市连欣科技有限公司

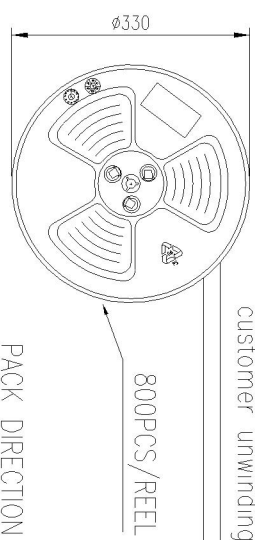
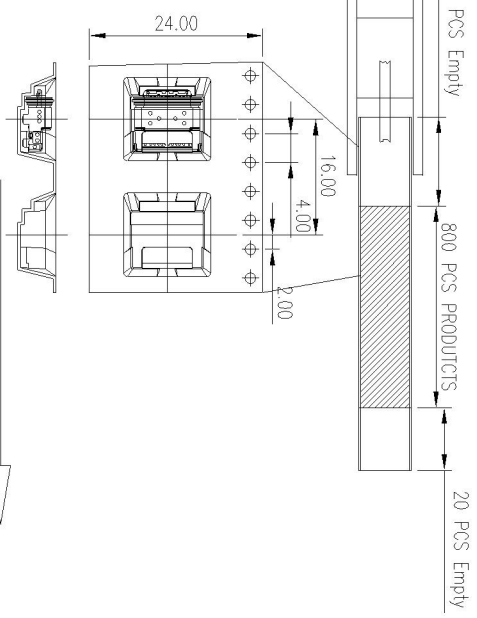
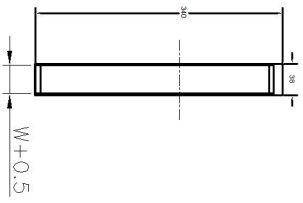
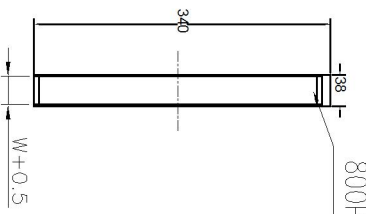
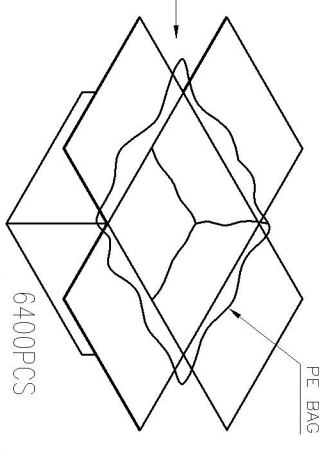
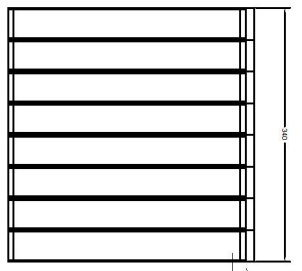
TOLERANCE UNLESS OTHERWISE SPECIFIED	
.XXX ±0.10	.X' ±3'
.XX ±0.20	.XX' ±2'
.X ±0.30	
APPROVED	
CHECKED	
DRAWN	ZEE.WANG
DATE	2021-01-09

PART NAME:	TYPE C/F 24PIN 防水IP68板上双贴 SMT				
PART No:	XUBF-0339-0795				
PROJECTION:	UNIT:	SCALE:	SHEET:	REV.:	
	mm	1:1			

9 8 7 6 5 4 3 2 1

A B C D E F

REV.	ECH.NO.	APPD.



CONNECTOR (PCS)	REEL	CARTON
	800	6400

TOLERANCE UNLESS OTHERWISE SPECIFIED	XXX ±0.10	.XX ±0.20	.X ±0.30
	.X	.XX	.XX

深州市连欣科技有限公司	PART NAME:	TYPE C/F 24P1N 防水IP68板上双贴 SMT
	PART No:	XUBF-0339-0795
	PROJECTION:	

APPROVED	CHECKED	DRAWN	DATE

A B C D E F