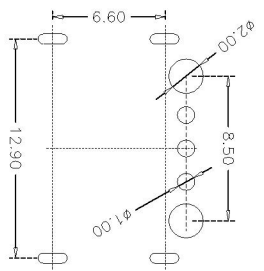
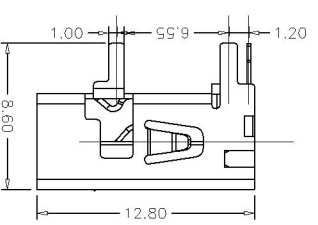
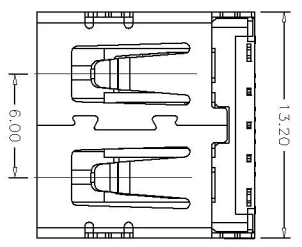
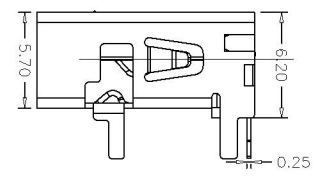
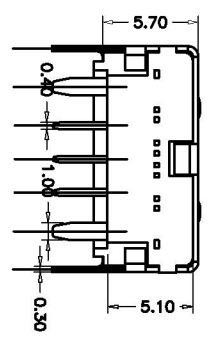
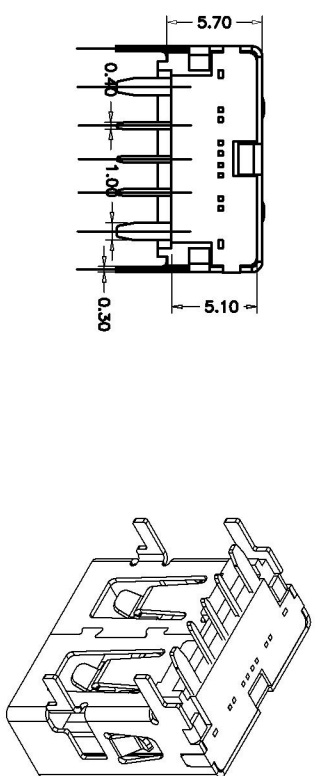
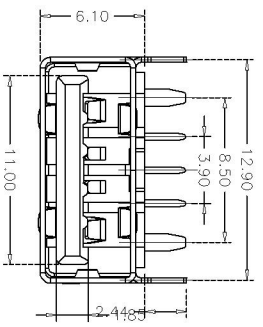


版本 REV.	变更内容 MODIFICATION	日期 DATE
A		



P.C.B LAYOUT



ELECTRICAL CHARACTERISTICS:  
 CONTACT CURRENT RATING : 15AMPERES.  
 DIELECTRIC WITHSTANDING VOLTAGE : AC 500V R.M.S.  
 INSULATION RESISTANCE : 1000 MEGOHMS MINIMUM AT DC 500V.  
 CONTACT RESISTANCE : 30 MLLIOHM MAXIMUM.  
 OPERATING TEMPERATURE : -55°TO+105°

MECHANICAL CHARACTERISTICS: CONTACT INSERTION FORCE :3.57KG MAXIMUM.  
 CONTACT SEPARATION FORCE :1.0KG MINIMUM

MATERIALS:  
 HOUSING:PA6T GREEN  
 CONTACT:PHOSPHOR COPPER T=0.25?;01mm.  
 SHELL: copper.T=0.30?;02mm;

CONTACTS:GOLD FLASHED:10"30"50"100"150"300"  
 END OF NI-50U"MIN  
 SHELL: NICKEL PLATED OVER 30~100U" MIN.

# 深圳市连欣科技有限公司

单位 UNIT	公差 TOLERANCE UNSPECIFIED	图号 DWG NO.	图名 TITLE	比例 SCALE	角法 PROJ.
MM	±0.30 ±0.20 ±0.10 ±0.05 ±0.02	XDBF-0050-01	大电流USBAE四脚平口	1:1	第一角法
製圖 DRAWING	設計 DESIGN	模號 DWG NO.	品名 TITLE	版本 REV.	CUSTOMER DRAWING
核准 APPROVE	審核 CHECKED			A	