

1

2

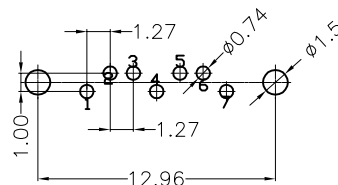
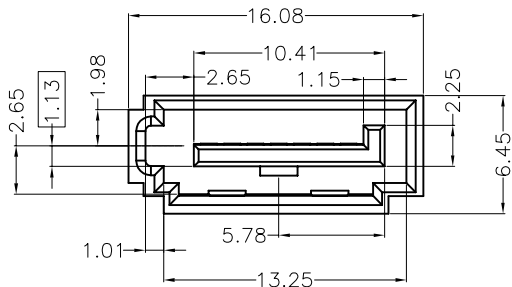
3

4

5

6

REV.	ECN NO.	DESCRIPTION	DRWN	APPD.	DATE
REV	ECN_NO.	DESCRIPTION	DR.	APPD.	DATE



PCB LAYOUT

SPEC:

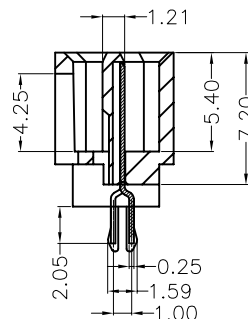
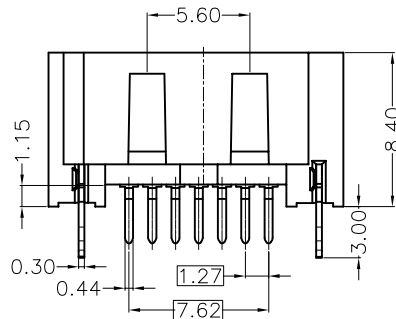
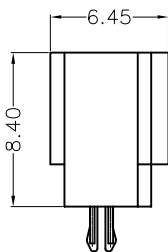
Current Rating: 3Amps  
 Insulator Resistance: 5000mΩ Min  
 Dielectric Withstanding: AC 500V  
 Operating Temperature: -40° to+105°  
 Contact Material: Copper alloy T=0.25  
 Insulator Material: Polyester, UL 94V-0 LCP  
 Finish :  
 Gold/tin plating on contact area  
 100u" min. Tin-Lead Plating on soldertails  
 50u" min. nickel under plating over all tin,  
 Max. Processing Temp:  
 230C° for 30-60seconds (260C° for 10 secinds)

A

A

B

B



SECTION A-A

建议引脚定义:

1#	GND (接地)
2#	A+ (传输正极)
3#	A- (传输负极)
4#	GND (接地)
5#	B- (接收负极)
6#	B+ (接收正极)
7#	GND (接地)

C

C

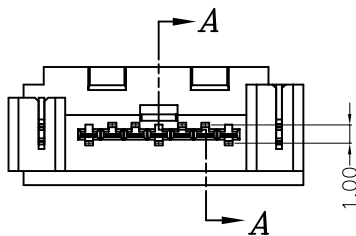


Table:

PRODUCT NO.	ITEM	PART NO.	PART NAME	Q'TY	Material
ST11370101U	1	PS00490610	CONTACT	7	C2680R-H,GOLD 1U"
	2	PP0093BK10	HOUSING	1	LCP+30%GF,BLACK
	3	PP0093BK10	鱼叉	2	C2680R-H,TIN 100U'

UNITS mm	SCALE SCALE	REV. REV.	SHEET PAGE	深圳市连欣科技有限公司	
DATE				TITLE	
GENERAL TOLERANCE				SATA 7P 全包开窗 A型180度插板式 DIP	
0. 0.0 0.00 0° 0.0°		CHK.	MAT'L	FINISH	
		APPD.	MATERIAL	FINISH	
			DWG.NO. DWG_NO.	C	PART NO. XUTS-0718-0720
					SIZE A4

1

2

3

4

5

6

D

D